

SEEKAT Marine Charters



Contact

Jon Shaw: Mobile 07770 816460

.....Home 01407 83004

Email info@seekatcharters.co.uk

'Seekat C'

Registered : BEAUMARIS

Official No: 905420

MMSI No: 235022763

Call sign: MGST5

AVAILABLE FOR CHARTER. BASED AT

AMLWCH PORT NORTH WALES CAN WORK FROM ANY LOCATION.

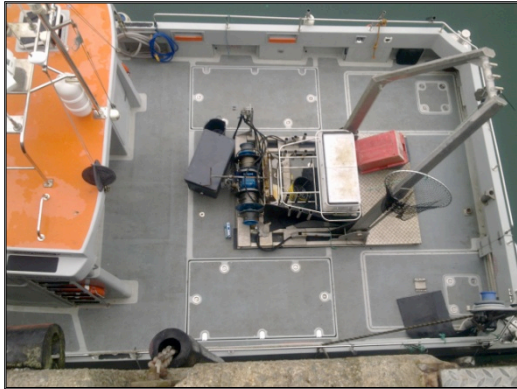
SEEKAT C IS A SOUTH BOATS CATAMARAN WITH ISLAND WHEELHOUSE. CONSTRUCTED AT THE ISLE OF WIGHT DURING 2002.

- **THE VESSEL HAS A VERY HIGH SPECIFICATION, VERY STABLE AND HAS EXCELLENT SEA KEEPING QUALITIES.**
- **WELL SUITED VESSEL FOR MOST MARINE SURVEY WORK.**
- **MARINE MAMMAL AND ORNITHOLOGICAL SURVEYS.**
- **PHOTOGRAPHY, FILMING WORK.**
- **SUPPORT WORK.**
- **CREW TRANSFERS.**
- **DIVE SUPPORT.**
- **ROV SUPPORT.**

SAFETY EQUIPMENT

- **ALL SAFETY EQUIPMENT AS REQUIRED BY MCA 60 MILE CODE OF PRACTICE WITH WORKBOAT ENDORSEMENT.**
- **CERTIFIED BY YDSA TO CARRY 12 PASSENGERS PLUS 2 CREW.**
- **ALL LIFTING EQUIPMENT CERTIFIED.**
- **OPERATED BY CERTIFIED YACHT MASTER OFFSHORE SKIPPER.**

SEEKAT Marine Charters



Contact

Jon Shaw: Mobile 07770 816460

.....Home 01407 830040

Email

info@seekatcharters.co.uk

CONSTRUCTION

○ SEEKAT C IS GRP CONSTRUCTION
○ DIMENSIONS LENGTH 11 MTR X 5 MTR BEAM X 1.2 MTR DRAUGHT
○ FLUSH WORKING DECK AREA IS A MASSIVE 496 FT2
○ TRANSOM DOOR AND DIVING LADDER TO PORT.
○ SINGLE ARM DAVIT FOR EMERGENCY RECOVERY.
○ WHEELHOUSE 100 FT2 WITH SEATING.
○ P C EQUIPMENT TABLE 240V SOCKETS NAVIGATION TABLE
○ SEARCH LIGHT AND DECKLIGHTING FOR NIGHT WORK
○ HEATING AND COOKING FACILITIES.
○ HEADS AND SINK BELOW DECK SINGLE BERTH AND STORAGE

MACHINERY:

○ TWIN CUMMINS 6BTA5.9M 280HP-TURBOCHARGED DIESEL ENGINES GIVE SPRINT SPEED TO 25 KNOTS AND A LOADED CRUISING SPEED OF 18 KNOTS.
○ HYDRAULIC STEERING WITH NAVITRON AUTO PILOT
○ MECHANICAL DECK WASH AND ELECTRIC SALT WATER AND FRESH WATER DECK SUPPLIES. ELECTRIC ANCHOR CAPSTAN.
○ A 240 VOLT 5KW- INVERTER.

SEEKAT Marine Charters

SEEKAT Marine Charters



Contact

Jon Shaw: Mobile 07770 816460

.....Home 01407 830040

Email

info@seekatcharters.co.uk

ELECTRONICS & NAVIGATION:

○ FURUNO RADAR WITH OPEN ARRAY SCANNER.
○ SEAPRO2000 PRO PC BASED CHART PLOTTER.
○ COMAR AIS.
○ LAPTOP WITH 15" WIDESCREEN MONITOR.
○ TELEVISION, DVD PLAYER, CD PLAYER , RADIO
○ FURUNO 7" SONAR.
○ ICS NAVTEX.
○ FURUNO DGPS. NAVIGATOR.
○ FURUNO GPS/WASS NAVIGATOR.
○ ICOM DSC RADIO.
○ ICOM RADIO.
○ ICOM HAND HELD RADIO .

OTHER FACILITIES:

○ REMOVABLE HYDRAULIC A FRAME.
○ 600KG TWIN DRUM WINCH FOR SAMPLE GRAB AND, DEPLOYMENT OF SURVEY/VIDEO/FISHING EQUIPMENT ETC ,
○ SINGLE ARM DAVIT WITH 750 KG HYDRAULIC CAPSTAN.
○ SIDE SWIVEL MOUNTING FOR EASY DEPLOYMENT OF ADCP, SONAR, TRANSDUCERS DURING MOVING VESSEL SURVEYS.
○ ELEVATED BIRD/MAMMAL VIEWING PLATFORM WITH SEATING FOR THREE PEOPLE.
○ ACCOMMODATION AVAILABLE (SELF CATERING COTTAGES) WWW.RHIWLASCOTTAGES.CO.UK
○ WORKSHOP & SECURE STORAGE (UNDERCOVER AND OPEN)
○ CODED RIB (SAFETY BOAT ETC) AVAILABLE BY ARRANGEMENT
○ HEAVY LIFT VESSEL (MOORINGS, TRAWLING, ETC) AVAILABLE BY ARRANGEMENT

SEEKAT Marine Charters

CONTACT

Jon Shaw: Mobile 07770 816460

Home 01407 830040

Email info@seekatcharters.co.uk

SAMPLE OF WORK CARRIED OUT WITH CUSTOMERS ABOARD SEEKAT C

- + ACOUSTIC MONITORING
- + COMMERCIAL DIVE SUPPORT
- + CREW TRANSFERS
- + INSTALL SUBSURFACE BUOY MOORINGS
- + DEPLOY AND RECOVER STATIC INSTRUMENT FRAMES (ADCP AWAC ETC)
- + DEPLOY AND MONITOR T'POD PORPOISE CLICK DETECTORS
- + DROGUE TRACKING SURVEYS
- + DYE TRACING
- + FISHING SURVEY/BEAM/OTTER TRAWLING
- + GRAB SAMPLING
- + LIGHT CARGO /PARTS TRANSFER
- + MAGNETOMETER WRECK SEARCH
- + MOVING VESSEL SURVEYS WITH ADCP AWAC MULTIBEAM SONAR
- + ORNITHOLOGICAL SURVEY
- + PHOTO ID OF BOTTLE NOSE DOLPHINS
- + PLANKTON SURVEY
- + ROV SURVEY/TEST
- + SATELLITE DROGUE TRACKING
- + SEDIMENT TRACING
- + SIDE SCAN SONAR SURVEYS
- + UNDER WATER VIDEO
- + WATER QUALITY SURVEY

Layout Plan: SEEKAT C

